

# Navigators Gazette

MARCH- APRIL 2026

[www.navigatorslogistica.com](http://www.navigatorslogistica.com)

PRECISION IN MOTION BY NAVIGATORS

## SUCCESSFUL TRANSPORT OF CONVERTER REACTOR & INSULATOR ACCESSORIES

## FREIGHT RATES SURGE OVER 200% AMID WEST ASIA CRISES

FULFILLING GCC CARGO MOVEMENT  
BY AIR & LAND

# PRECISION IN MOTION BY NAVIGATORS

## SUCCESSFUL TRANSPORT OF CONVERTER REACTOR & INSULATOR ACCESSORIES

**NG News desk, Dubai:** The Industrial projects team together with the ground handling division of Navigators recently executed a meticulously planned overland transport movement involving critical converter reactor and insulator accessories.

The cargo consisting of 14 packages with a total weight of 110 metric tons, was received at Jebel Ali port and promptly handled with the highest level of operational precision. Following the completion of all port clearance formalities, the cargo was carefully prepared for onward transportation.



Given the size, weight, and sensitivity of the industrial equipment, the movement required detailed planning, specialized handling, and seamless coordination between multiple operational teams. Through careful route planning and strict adherence to safety and transport protocols, the shipment was successfully moved by land to the client's project site in the GCC region.

This operation once again highlights Navigators' capability in managing complex industrial project cargo, ensuring that even the most demanding logistics challenges are delivered with accuracy, efficiency and reliability.

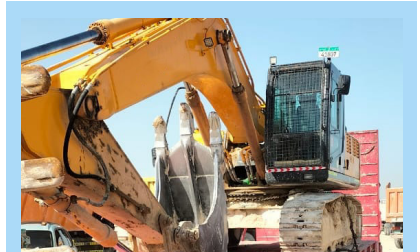
## STRONG LAND TRANSPORT SUPPORT MACHINERY SHIFTING AT A MAJOR DEVELOPMENT PROJECT IN THE UAE

**NG News desk, Dubai:** The land transportation department of Navigators in Dubai recently carried out a specialized shifting operation in support of a major developmental project for a reputed client.

The assignment involved the internal movement of heavy equipment across different zones within the expansive project site. Navigators provided comprehensive support by deploying trucks and trailers to facilitate the safe and efficient relocation of machinery from one location to another.

Given scale of the project and the time-sensitive nature of the requirement, the land transportation department mobilized its own fleet and operational resources to ensure seamless execution. Careful coordination, experienced operators and strict adherence to safety protocols enabled the team to complete the machinery shifting process efficiently within the stipulated timeframe.

This operation once again demonstrates Navigators' ability to provide reliable on-ground logistics support for large-scale industrial and infrastructure projects, delivering precision, flexibility and operational excellence.



## DUBAI NAMED WORLD'S CLEANEST CITY FOR SIXTH CONSECUTIVE YEAR

Dubai has been named the world's cleanest city for the sixth consecutive year, according to the Global Power City Index (GPCI) issued by the Institute for Urban Strategies at Japan's Mori Memorial Foundation.

The ranking reinforces the emirate's reputation for high standards of quality of life, sustainability, and urban management, while highlighting its continued global competitiveness as a destination to live, work and visit.

Dubai achieved a 100 per cent satisfaction score in the city cleanliness indicator under the environment pillar of the Global Power City Index, outperforming major global cities evaluated across key measures of urban performance.

The Global Power City Index is one of the world's leading benchmarks assessing urban competitiveness.

Source: *Online news portals*

## FREIGHT RATES SURGE OVER 200% AMID WEST ASIA CRISES

According to exporters and freight forwarders, both air and sea freight rates have risen sharply, with air freight charges increasing by nearly 250-300%.

Both importers and exporters are suffering due to higher freight rates. As airlines are taking longer routes, air freight rates charged by some airlines have increased by nearly 300%. Meanwhile, several shipping companies and ports have imposed a War Risk Surcharge (WRS) ranging from \$500 to \$4,000 for cargo moving to and from the Upper Gulf, Arabian Gulf and Persian Gulf due to disruptions around the Strait of Hormuz.

Source: *Online news portals*

DP World news

## DP WORLD ENHANCES INDIA - MIDDLE EAST SERVICE RELIABILITY

DP World's Marine services business, shipping solutions has acquired the DP World Chennai, a 5,000+ TEU container vessel, and integrated it into its Red Sea-Gulf-India service, strengthening trade links between India and the Middle East.

The vessel's maiden call at Jebel Ali marks shipping solutions' capacity of over 6 million TEU and enhances schedule reliability for customers across key markets in the region.

This acquisition is an integral part of DP World's comprehensive strategy to establish more robust and varied network through a mix of proprietary assets, sustained investment and enhanced synergy between port and marine services. With the continued expansion of trade volumes throughout the region, DP World is dedicated to refining service consistency, facilitating planning predictability and accommodating the evolving logistical requirements of its clientele.

Source: *Online news portals*



## ETIHAD CARGO LAUNCHES ETIHAD CARGO EXCELLENCE HUB

Etihad Cargo, the cargo and logistics arm of Etihad Airways, announces the launch of the air cargo industry's first logistics training academy by an airline.

The Etihad Cargo Excellence Hub is established to ensure consistent operational, safety and compliance standards across Etihad Cargo's global partner network. As regulatory complexity increases and networks expand, structured capability development is critical to maintain reliability and customer trust.

The platform provides mandatory and elective training for Etihad Cargo representatives and stakeholders worldwide. The curriculum includes Etihad Cargo operating standards, products and service framework, Safety and compliance modules aligned with international regulations, Industry-certified programmes delivered with accredited institutions and targeted soft skills training to strengthen customer engagement.

*Source: Online news portals*

### NAVIGATORS SHIPPING AND LOGISTICA L.L.C

**ABU DHABI**  
P.O. Box. 2920, Abu Dhabi, U.A.E | Tel: +971 2 6339400

**BAHRAIN**  
PO Box 402, Manama - Kingdom of Bahrain | Tel: +973 3 599 8568

**DUBAI**  
P.O. Box: 6284, Dubai, U.A.E | Tel: + 971 4 3309938

**DUBAI WORLD CENTRAL**  
P.O. Box. 644280, DWC, Dubai, U.A.E | Tel: +971 4 8879949

**HAMRIYAH, SHARJAH**  
P.O. Box. 52152, Hamriyah Fze, Sharjah, U.A.E | Tel: +971 6 5269222

**JEBEL ALI**  
SB 07, North Zone, Jebel Ali Free Zone, UAE | Tel: +971 4 8837111

info@navigatorlogistica.com

ABU DHABI ■ BAHRAIN ■ DUBAI ■ DWC ■ HFZA SHARJAH ■ JEBEL ALI

## AD PORTS GROUP CONFIRMS BUSINESS CONTINUITY ACROSS ALL OPERATIONS

AD Ports Group has confirmed that all operations across its clusters continue as normal considering current regional developments. As a precautionary measure, the group has activated its crisis management and business continuity protocols, in coordination with the concerned authorities in the UAE to safeguard its workforce, partners and stakeholders, while ensuring uninterrupted services to customers.

All UAE ports and terminals managed and operated by the group's ports cluster, in addition to related services remain fully operational. As traffic through the Strait of Hormuz has declined, a corresponding reduction in vessel calls at Khalifa port is anticipated. However, services at Khalifa port will remain fully operational and uninterrupted.

The group expects increased volumes across its diversified global maritime network as a result of shifting trading routes due to the evolving regional developments. Across the group's maritime & shipping cluster, the majority of its 122 shipping vessels including container, bulk, Ro-Ro and multipurpose vessels are operating outside the Strait of Hormuz.

Those currently within the Strait of Hormuz continue to operate intra-Gulf services. Overall, the impact on the maritime & shipping cluster is expected to be limited. The group's economic cities & free zones and logistics clusters are likewise expected to experience limited impact.

*Source: Online news portals*